

Vetus E7
Hand-Carried Veterinary Ultrasound System

Envision, Enlighten, and Explore



Envision, Enlighten, and Explore





mindray

Since its founding, Mindray Animal Medical has been dedicated to developing innovative and accessible ultrasound solutions for the animal care environment. It is this commitment to excellence that has brought you ZONE Sonography® Technology+ (ZST⁺), evolving industrial designs and comprehensive disinfection solutions.

The Vetus E7 Ultrasound System has been thoughtfully designed to overcome the obstacles clinicians face in today's challenging healthcare environment. With a sealed user interface design and revolutionary, software-based beamformer technology, ZST⁺, the Vetus E7 System combines best-in-class image quality with an intuitive user experience to help ensure reliable and efficient diagnosis during the most challenging exams.

Thin, light, powerful

With a weight and thickness of just 6.6 lbs and 1.7 in, respectively, the Vetus E7 System's main unit is one of the lightest and thinnest laptop ultrasound machines in the industry. In addition, this compact, durable, and powerful System houses advanced hardware built to maximize performance in all applications.



Magnetic power socket

- Easy connection
- Prevents cable strain



U-Bank

- U-bank battery companion supports up to eight hours of continuous scanning

Specialized transducer holder

- Enables easy application of sterile cover



Innovative storage

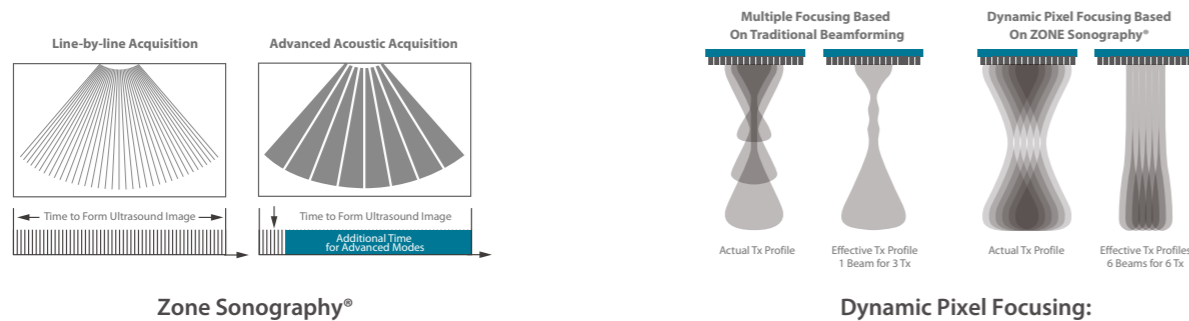
- Three storage baskets
- Interchangeable design

Expanded height adjustment

- Flexible height adjustment for optimal scanning

ZONE Sonography® Technology+

The Vetus E7 Ultrasound System is the first-ever laptop-based system to be powered by ZST+, providing mobility and reliability in an extraordinarily compact design.



Ideal System for Your Veterinary Practice



Innovative design

- Intuitive touch interface
- Seamless design control panel
- Sealed touchpad

Sturdy construction

- Prevent residue buildup
- Resist corrosion from harsh cleaning agents
- Highest standard of material selection





Liver and gallbladder of canine



Portal Vein of canine



Adrenal gland of canine



Renal blood flow of canine



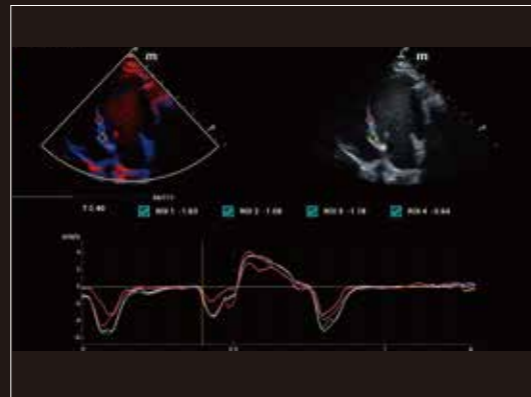
Spleen of canine



Spleen blood flow of canine



Cardiac blood flow of canine



TDIQA of canine

