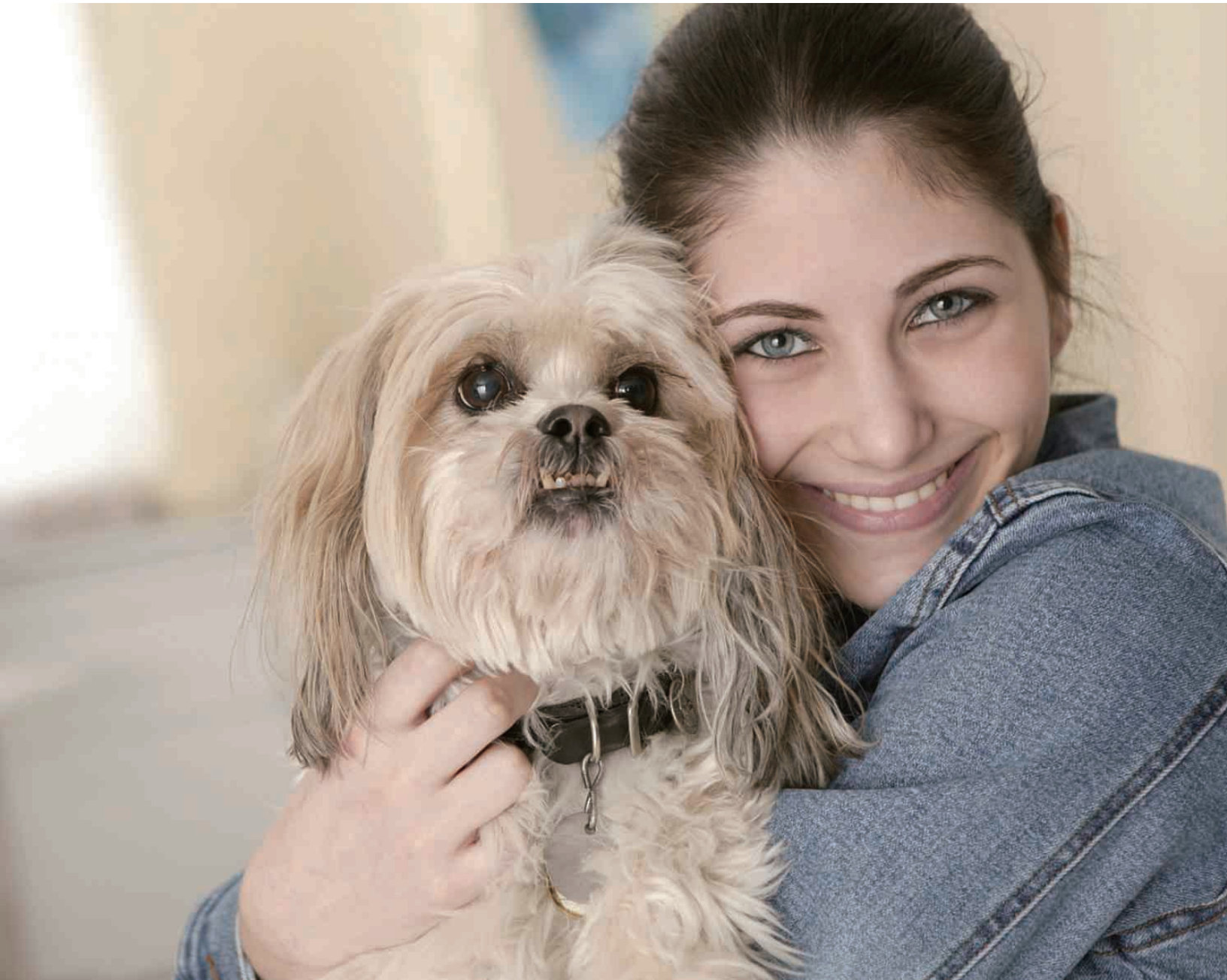


**mindray**

*Medna*  
Medical Equipment Inc.

**DP-30 Vet** Power  
Ultrasound Imaging System



### Ergonomic design

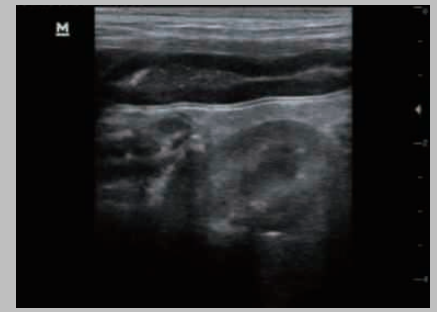
- 12.1" LED monitor with tilting functionality
- Compact design for extreme mobility

### Diagnostic confidence with ease of use

- Optional power Doppler and PW mode for additional diagnostic information
- Tissue Harmonic Imaging (THI) for enhanced contrast resolution and one-key quick image optimization by Image Processing (IP)
- iStation™ patient information management system
- Versatile applications with multiple transducers

### Specifically designed for veterinary applications

- Dustproof keyboard cover keeps the control panel free from contamination
- Specially designed veterinary transducers with anti-decay surface and longer cable



Feline dodecadactylon



Feline Kidney



For more information about Mindray products for veterinary practice and animal research **visit [www.mindray.com](http://www.mindray.com)**



**mindray**

healthcare within reach