



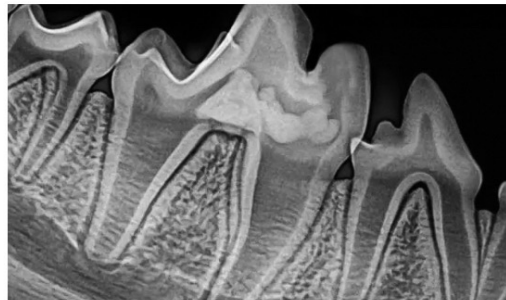
DCX5000HD

Handheld Dental X-ray Source

- Compact size, pocket-friendly design
- Ultra-long battery life, capable of over 200 exposures on a single charge
- Remote exposure and wireless communication
- Lightweight, weighing less than 1kg, for easy one-hand operation

Applications

Handheld and wall mounted dental X-ray



Specification >>



Product Model	DCX5000HD
Nominal Power	210W
kV Range	60~70kV
mA Range	1~3mA
Focal Spot Size	0.4mm
Anode Disk Target Angle	12°
Communication	RS232/ WIFI
Operation Temperature	0~40℃
Size (W*D*H)	130*70*89mm (Long tube excluded)
Weight	< 1kg



Unit: mm

Specifications subject to change without notice or liability.

Medna Medical Equipment Inc.

Ontario: 20 Strathearn Ave #3, Brampton, ON L6T 4P7
 BC: 124 Garden Ave, North Vancouver, BC V7P 3H2

Tel: 833 333 2581
 Email: info@mednamedical.com
 Web: www.mednamedical.com

